



SYMA X5 SERIES

- 1 - Syma X5
- 2 - Syma X5C
- 3 - Syma X5C-1
- 4 - Syma X5SC
- 5 - Syma X5SC-1
- 6 - Syma X5SW



SYMA X5 SERIES

Syma X5, Syma X5C, Syma X5C-1,
Syma X5SC, Syma X5SC-1, Syma X5SW



SYMA X5 SERIES

Syma X5 Series includes Syma X5, Syma X5C, Syma X5C-1, Syma X5SC, Syma X5SC-1, Syma X5SW. The entry X5 has no camera. The models that were launched following the X5, all of them have camera. The X5SW has a FPV camera for real-time transmission.

GENERAL FEATURES:

- Each arm has a plastic mesh that protects the blades. Motors and Main Gears are cover protected.
- The landing pads on the bottom makes landing a lot safer. There are landing gears higher and lower depending on model.
- The 6-Axis Gyro system can correct itself in mid flight for stability.
- The transmitter is the standard type used in most Syma models (interchangeably).
- Some challenges of this series are: the battery specifications are rather low in proportion to dimensions of the models and charging time is over an hour and a half, which is much longer than average drones.
- From X5C model ahead, the drone includes a Micro SD card. The resolution of the pictures is set at 1280 x 720. The video capability is 30 frames per second.
- From Syma X5SC ahead, it's available an intelligent transmitter which supports telemetry function and WI-FI images transmission (SW). The Pilot can real-time monitor the flight data like battery voltage, temperature, altitude and other. The Pilots are also allowed to view the first person view photography if installing a mobile phone on the RC Transmitter. The WI-FI control range is about 50 meters. The radio range vary from 50 to 100 meters.
- The headless mode, the ability to fly regardless of the Drone nose was added from model X5SC ahead.
- The X5S/X5SC has a higher Landing Gear when compared to Syma X5C/X5C-1.
- From X5S/X5SC ahead is available in two colors, black and whit. Both have a glossy finish with better build quality than previous models.
- The X5SW has shiny shell and high quality finishing with reinforced landing gear. It supports cellphone control via WI-FI connectivity (Android / IOS).

GENERAL SPECIFICATIONS:

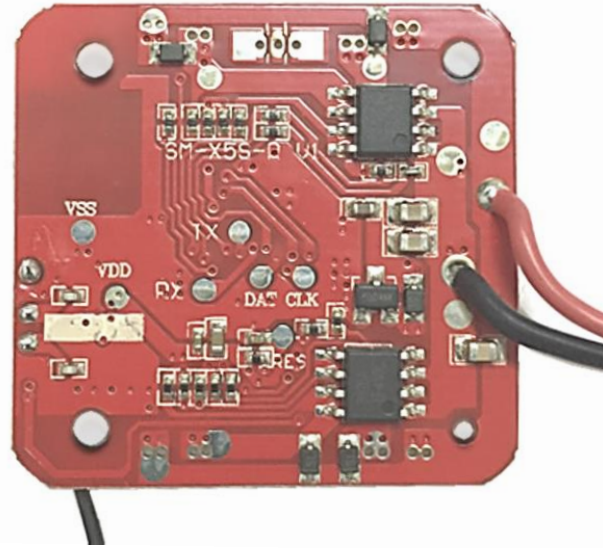
- Brand: Syma / Series: X5 (different models)
- Camera: 2.0 Mega-pixel Camera(Recording or FPV, according models)
- 6-Axis Gyro Stabilization System.
- Based on 2.4 GHz Frequency Industry Standard and 4 Channels.
- Product Dimensions: 31.0 cm x 31.0 cm x 8.0 cm or 10.5 cm).
- Weight: about 400 grams (vary) on plastic material.
- Flight Distance: 50 to 100 meters.
- Functions: 360-Degree 3D Rolling.
- Transmitter Batteries: 4 AA Batteries.
- Battery Specs: 3.7 Volts ranging from 500 to 750 mHA (according models).
- Flight Time: from 5 to 8 minutes.
- Charging Time: up to 1.5 hours.



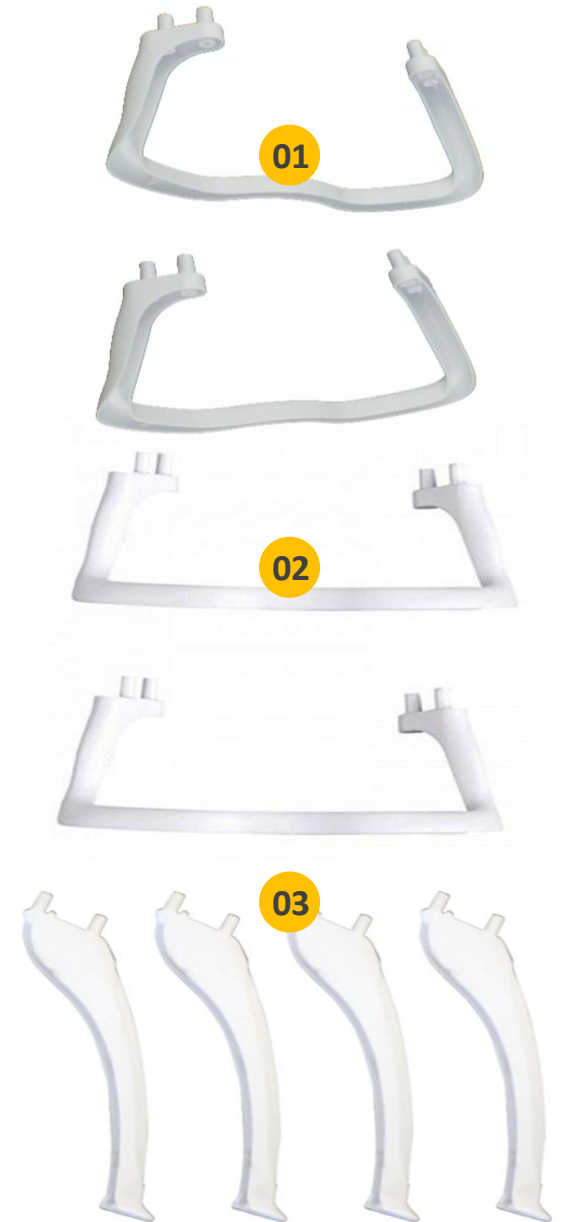
Syma X5 Series Motor



Syma X5 Series Receiver-board



Three Different Types of Landing Gear according X5 Models



Syma X5 Series Blades (Propellers)



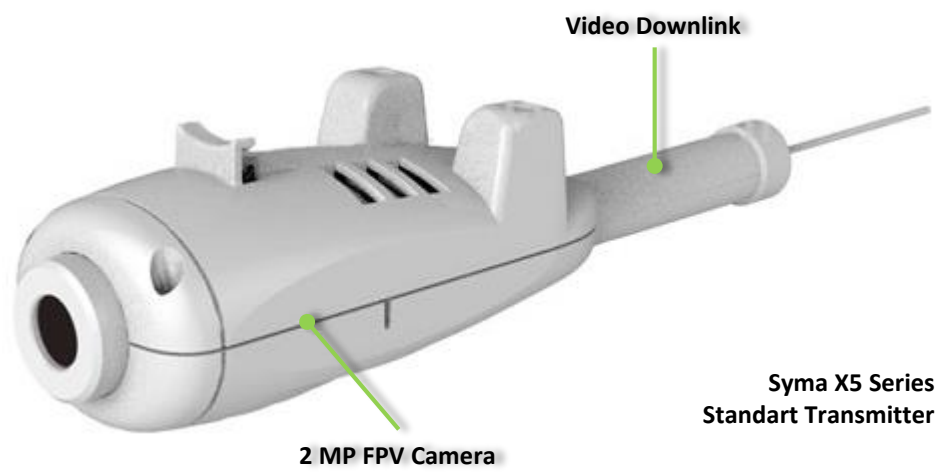
Syma X5 Series Lampshades



01 Micro SD Recording Camera



02 FPV – First Person View Camera





01

Syma X5 Series



02



03

1 – Main Gear without protection, easily damaged.
 2 – Syma X5 Series protective cover for main gear.
 3 – Protective cover for motors on Syma X5 Series.

 **HEADFREE**

 **360°**
Eversion

 **GAXIS**
Stabilization System

 **HD CAM**
Equipment

2.4 GHZ

4CH



Syma X5 Series



PACKAGE INCLUDES
 (RTF VERSION, CHECK MODEL AND SUPPLIER):

- 1 x Quadcopter with 2 megapixels camera.
- 1 x Remote control
- 1 x Mobile phone holder
- 1 x USB charger
- 4 x Propellers
- 4 X Propellers protections
- 1 X Li-po battery
- 1 X Screwdriver
- 1 X Manual