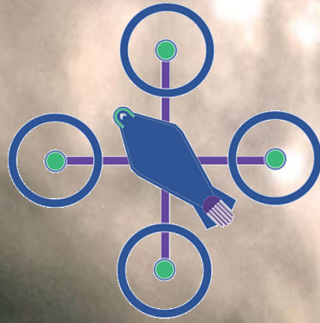


Quads For Fun

<http://quadsforfun.wix.com/quadsforfun>



Q500
TYPHOON

YUNEEK



Q500
TYPHOON



YUNEEC
ELECTRIC AVIATION

Q500
TYPHOON



FEATURES:

The Q500 Typhoon is a complete aerial photography and videography (FPV) system that records full HD 1080p, 60 FPS video and takes 12 megapixel still photos. There is a 4K Camera available also. The Q500 comes factory-assembled and it is ready to fly when out of the box. The Q500 includes the aircraft, a 1080P HD camera, a CGO2-GB 3 axis precision gimbal, the Yuneec ST10 ground station, Drone Battery, a charger, an 8GB micro SD card and number of accessories including like a sun shade, car charger, USB adapter & charger. The QX500 Typhoon has three Flight Modes to choose: known as Smart, Angle and Home, depending on the Pilot skills. **SMART MODE** is for beginners as it uses the drone's built-in GPS to establish a 8 meters safe circle around the pilot. The Q500 will always move in the direction the control stick is pushed relative to the pilot. If the Pilot pushes the stick to the left the Drone will move to the left regardless of the direction the nose is pointing. It will also hold its position and keep a level attitude when the control stick is centered. Additionally there is also a geo-fence that will keep the Drone from traveling farther than about 90 meters from the Pilot or takeoff position. **PILOT-ANGLE MODE** is for experienced drone pilots. The Quad will move in the direction the control stick is pushed relative to the nose of the Quadcopter. It gives to the pilot more control, without safe circle. It makes possible to get faster and high energy actions videos. The Multirotor will reach 120 meters of altitude above ground level.

HOME MODE is a safety feature. When activated, the Q500 Typhoon will automatically return to its home point and land about 3 meters of where it took off. It is safer for beginners and most important when Pilot experiences lose sight of the Drone. For any reason transmitter signal is lost, Return Home process will command the Typhoon back to the Pilot until the signal is reestablished.

REMOTE CONTROL STATION: The ST10 Personal Ground Station is an operating System Android. It has 10 Channels which offer a transmission distance or Range in optimum conditions up to 800 meters. It's a robust radio control modulation protocol with additional built-in video link frequency band of 5.8 GHz. The video transmission distance is up to 600 meters that delivers streaming video to the built-in screen of the transmitter. Real time telemetry data is available on the screen during flight. This data includes flight mode, altitude, speed over ground, distance from home, camera frames per second (FPS), GPS position coordinates, number of GPS satellites available and aircraft battery status. The screen is a LED backlit LCD Screen, capacitive Multi-Touch 5.5", tactile (Vibrating) and Audible Feedbacks. It has a built-In rechargeable Li-po battery witch work on 3.6 volts, 5200mAh and 18.72Wh. It's Auto-Charge via Micro-B USB Cable (Power Supply usually Included in box).

YUNEEC
ELECTRIC AVIATION

Q500
TYPHOON





The **Yuneec 4K Ultra HD Camera** directly translates to 4000 pixels wide in resolution. This is far superior to standard HD and it's the next wave in viewing and capturing videos. Yuneec Q500 is not the first 4K drone on the market, but it's the most advanced at its price point. The three-Axis Gimbal CGO3 4K camera has an optimized fixed focus lens. Its 115-degree wide angle lens are distortion-free. It's able to take 4K video at 30 FPS, 12 megapixel still images. It is compatible with the **CG03** iPhone and Android app for real-time video transmission. The Yuneec ST10 Transmitter is once for all advanced and complete with a touchscreen camera interface.

CG02 (Full HD) or CG03 (4K) Camera & Gimbal System:

The Q500's camera and 3-axis gimbal system has received high ratings by users for its solid stability and performance. The gimbal has a rating of 0.02 degrees which means it is impressively stable and accurate. Add to this a third axis that eliminates minor yaw movements and the Pilot get buttery-smooth video with hardly any jello. The two models of camera can take: 12MP stills and record 1080P videos (Full HD) or 16MP stills and record 4K videos. They offers a viewing angle of 130 or 115 degrees, respectively.



CG02 (Full HD) Camera Gimbal System:

- Dimension: 11.5 x 13.5 x 7.4 cm (4.5 x 1.4 x 2.9 inches);
- Weight: 185 grams (6.5 oz.);
- Focusing System Aerial Optimized Fixed Focus: field of View 130°;
- Video Transmission Range FCC Compliance: up to 600 meters (1968.5 feet);
- CE Compliance: up to 300 meters (984.252 feet) with ST10;
- Video Resolution FULL HD 1080p, adjustable to 60, 50 or 48 FPS;
- Photo Resolution 12 Megapixels;
- Storage (memory) micro SD Card, Class 10, 4 to 128 GB;
- Control Angle Accuracy: $\pm 0.02^\circ$;
- White Balance: automatic white balance;
- Transmission Band: 5.8 GHz;
- Operating Voltage: 7.0 volts to 14.0 volts DC;
- Working Temperature: 0 °C – 50 °C;
- Storage Temperature: -20 °C to 60 °C;
- Angular Vibration Range: $\pm 0.02^\circ$;
- Control Range Pitch: between -90° and 0°, Yaw: between 0° and 360°.



The most interesting feature of the CG02-GB camera gimbal system is that the Pilot can remove it from the Q500 and install it on the CGO SteadyGrip (sold separately) which allows the Pilot to use the camera like any other stabilized camera rig on the ground. Just add a smartphone to the SteadyGrip to view the video feed from the camera.

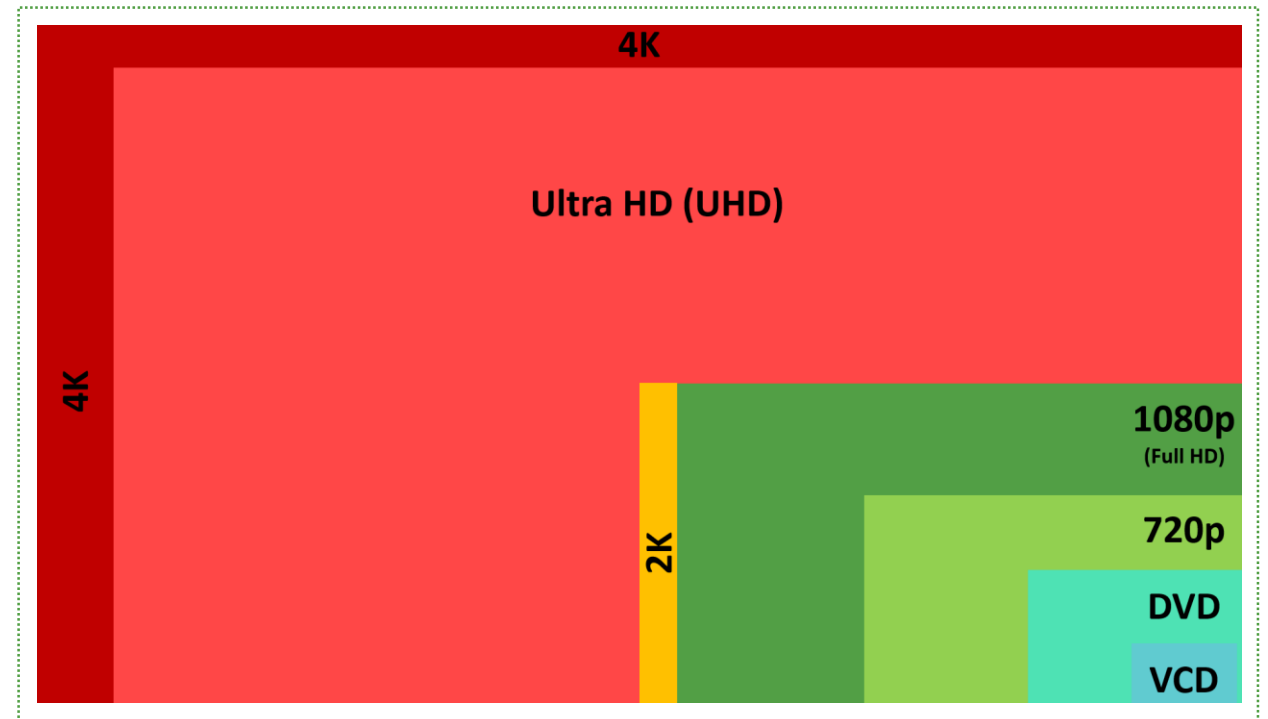


CGO3 4K 3-AXIS GIMBAL CAMERA (YUNEEC D500 TYPHOON)

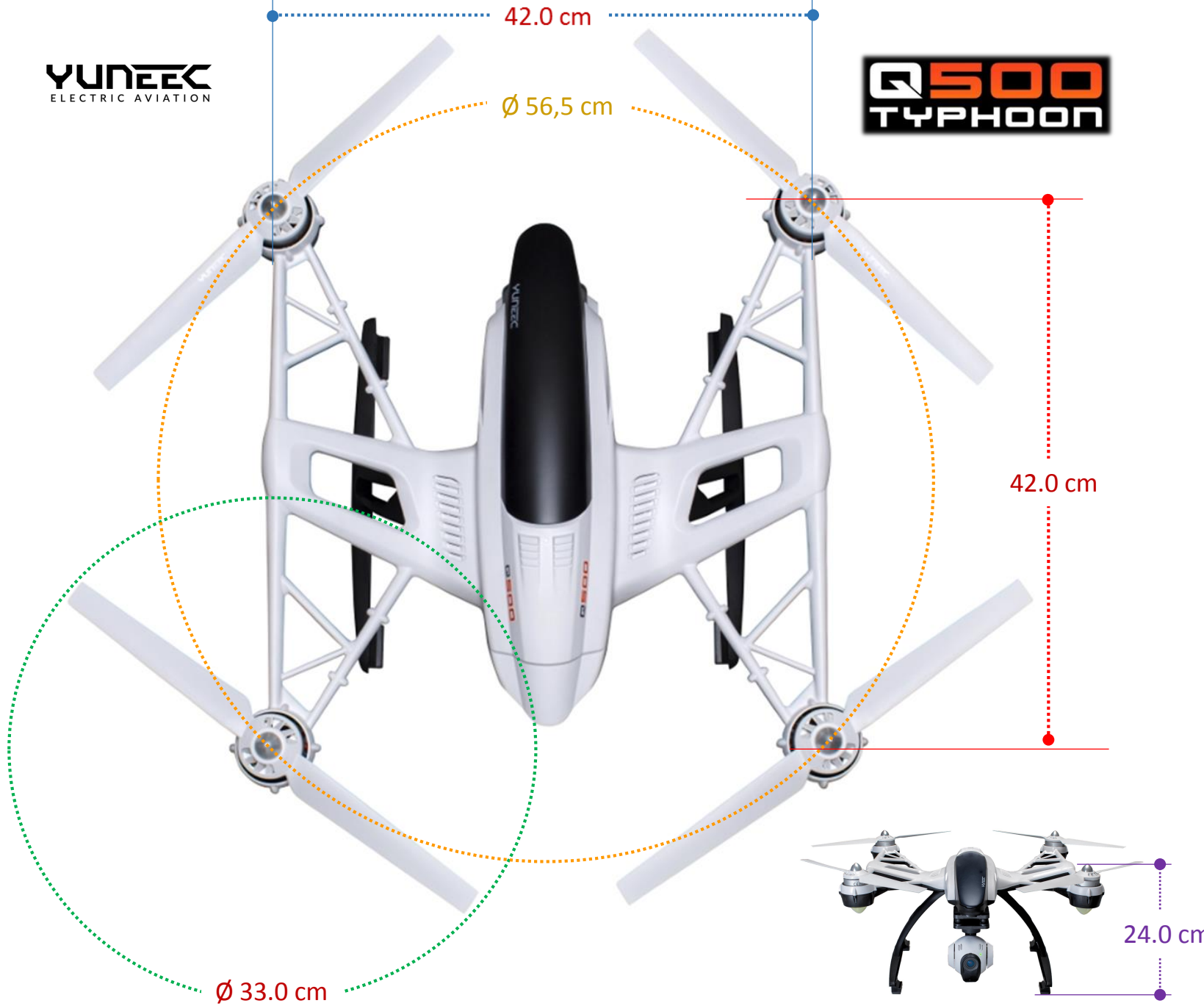
With ultra high-definition (UHD) resolution, four times higher than HD, the camera deliver high-quality images with the ability to capture slow motion 1080p, 120 fps and 12 megapixel photos. It captures in 4K with incredible detail and unparalleled realism.

Amazing Photos and Videos in 4K Resolution:

- Personal Ground Station with Built-in touchscreen
- Integrated 3-axis precision gimbal camera
- 4K / 30 fps ultra high definition video
- 1080p / 120 fps slow motion video
- User controlled video resolution, White balance and light exposure
- 12 Megapixel Photos with No-Distortion lens
- Handheld SteadyGrip for capturing video footage



Q500 TYPHOON



Flight Time

- About 25 Minutes;

Dimensions

- 42.0 x 42.0 x 24.0 cm (16.5 x 16.5 x 9.5 inches);
- Diagonal Length Without Rotor Blades: 22.2in (56.5 cm);
- Propeller/Main Rotor Diameter: 33.0 cm (13.0 inches);

Weight Without Battery and Payload

- 1130 grams (40.0 oz.);

Battery

- 5400 mAh, 3S, 11.1V Li-po (included);

Charger

- 3S, 11.1 V, Li-po DC Balancing Smart Charger with AC Adapter;

Transmitter

- 10-channel, 2.4 GHz with 5.8GHz video downlink (included);

3 Flight Modes

- Smart, Angle and Home Modes;

Maximum Flying Height

- Default 122 meters (400 feet), above Ground Level (Adjustable);

Maximum Rotation Rate

- 65°/s

Maximum Roll Angle

- 35 Degrees

Operating Temperature Range

- - 5°C to 80°C



5.8 GHz Built-in Antenna

Yuneec ST10

Take Still Photo Button

Start-Stop Motors Button

Rudder-Yaw Control

Throttle-Altitude Control



Volume and Navigation Touch-Activated Buttons (Volume Down, Volume Up, Menu, Home, Back)

Status Indicator (Battery, WIFI & GPS)

2.4 GHz Built-in Antenna Start/Stop Video Recording

Flight Mode Selection Switch

LED Indicator (On-Off)

Aileron-Roll Control

Elevator-Pitch Control

Power Switch

Yuneec ST10 Touchscreen Display

- 01 – Model Name
- 02 – Frames per Second for Video Recording Button
- 03 – Status Information
- 04 – Direct to Home Point
- 05 – Clock | Current Time
- 06 – GPS Status and Number of Satellites linked to ST10
- 07 – 5.8 GHz WIFI Video Link Status
- 08 – ST10 Battery Charge Level Status
- 09 – Drone Battery Voltage
- 10 – Altitude of Aircraft (Above Ground Level)

- 11 – Ground Speed of Quadcopter
- 12 – Distance of Drone from Home Point
- 13 – Take-Off Button
- 14 – Model Select
- 15 – Flight Settings Menu Button
- 16 – System Settings Menu Button
- 17 – Latitude-Longitude Position of Aircraft
- 18 – Number of Satellites for Aircraft
- 19 – GPS Status for Aircraft
- 20 – Flight Mode for Drone

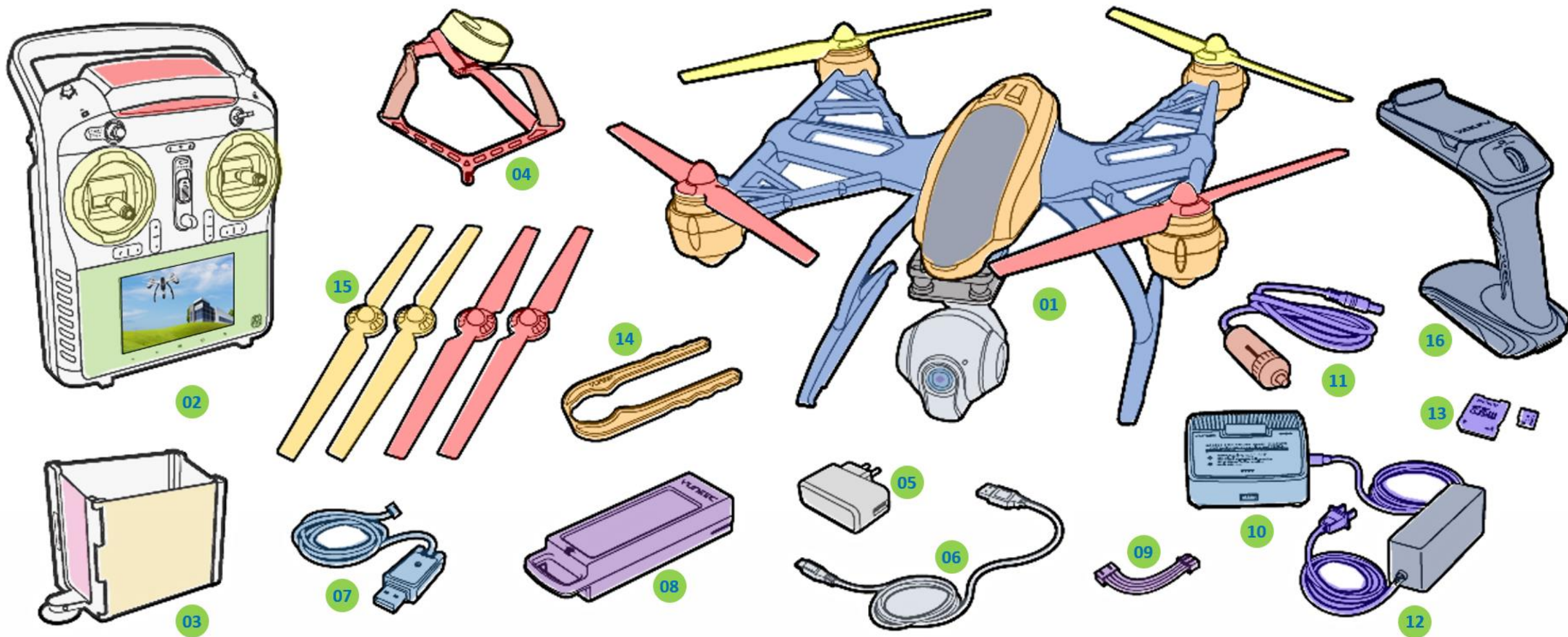


Yuneec D500 Accessories & Spares

- 01 – TYPHOON Airframe with Gimbal + Camera
- 02 – Transmitter and Personal Ground Station
- 03 – LCD Screen Sun Shade/Shield
- 04 – Neck Strap
- 05 – AC to DC USB Adapter/Charger

- 06 – USB to Micro USB Cable
- 07 – USB Interface/Programmer
- 08 – 5400 mAh, 3S, 11.1 V Li-po Battery
- 09 – 3S 11.1 V Li-po Balance Connector Charge Lead
- 10 – DC 3S 11.1V Li-po Balancing Charger

- 11 – Cigarette Lighter Receptacle Adapter
- 12 – AC to DC Adapter/Power Supply
- 13 – 8 GB micro SD Card with Adapter
- 14 – Motor Holder (Prop Installation Tool)
- 15 – Propeller / Rotor Blades
- 16 – CGO SteadyGrip





Yuneec D500 RTF Version Box



Yuneec D500 Body Shell



Yuneec D500 Propeller Set



Battery (Yuneec D500)
(5400 mAh, 3S, 11.1V Li-po)

DC Balance Charger
(Yunec Q500)



Power Supply with Power Cable
(Yunec Q500)



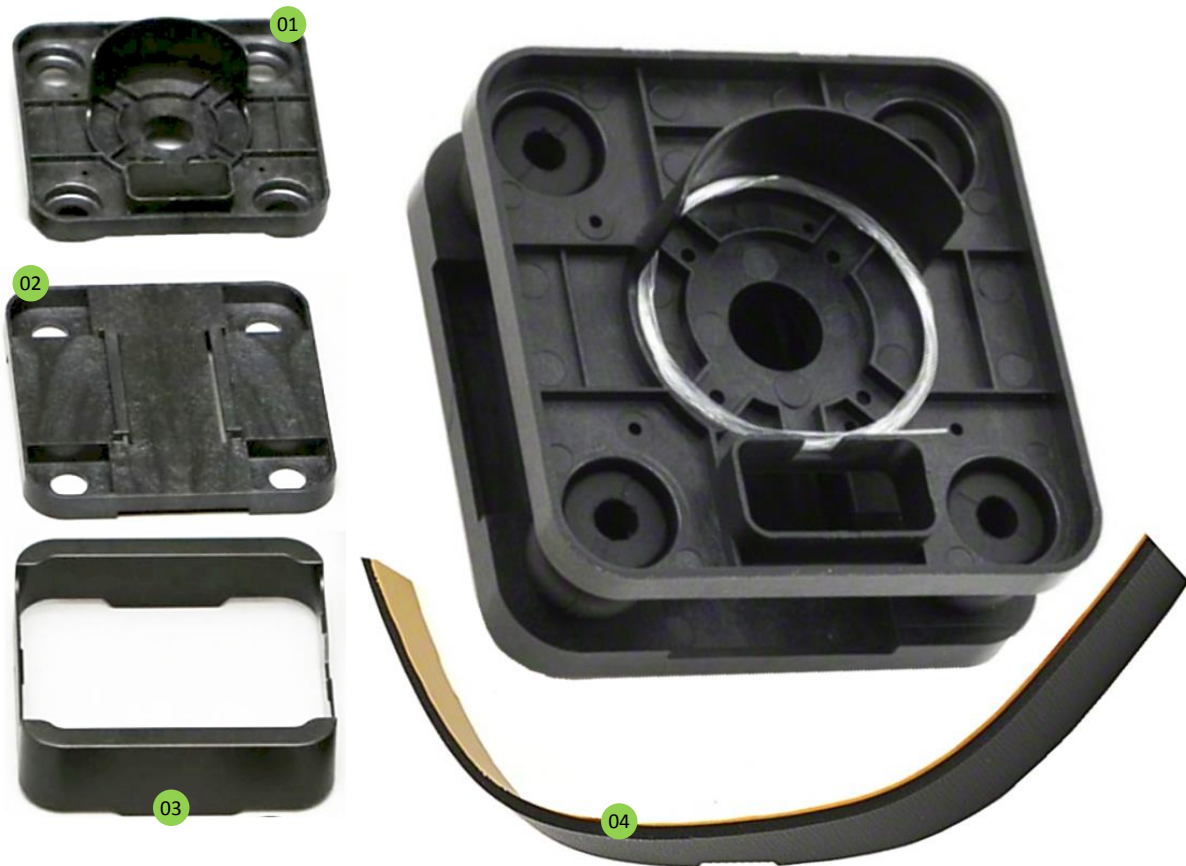
Landing Gear Set
(Yuneec Q500)



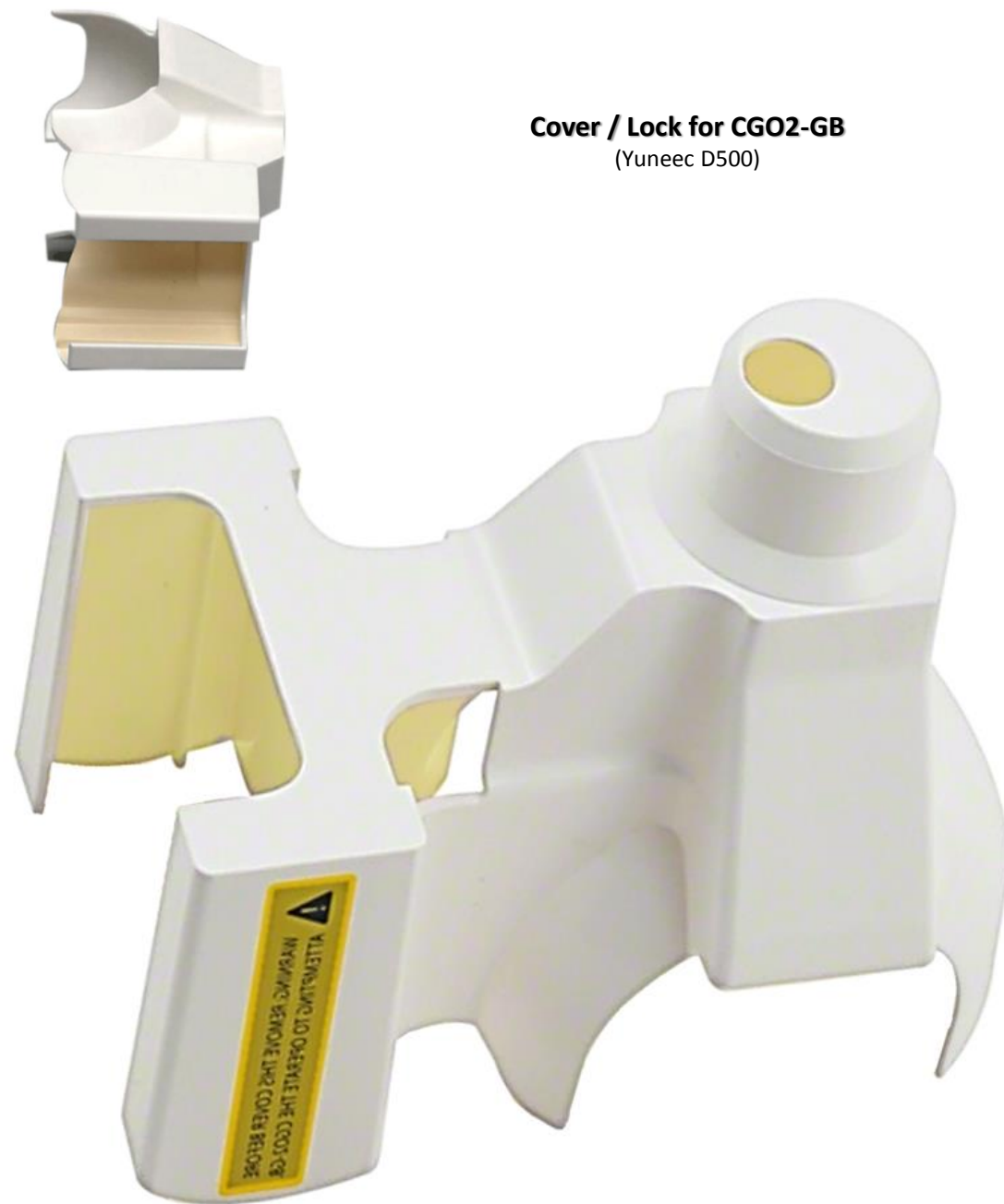
Motor Holder for Blades Installation Tool
(Yuneec Q500)



Mount Set for CGO2-GB
(Yuneec D500)



Cover / Lock for CGO2-GB
(Yuneec D500)



Rear Bottom LED & Cover

(LED board, LED cover and hardware, Red or White)



Battery Door Latch

(Lock Set and Hardware)



Plastic Switch Cover
(Yunec Q500)



Rubber Bumpers
(Yunec D500)

Yunec ST10 Neck Strap

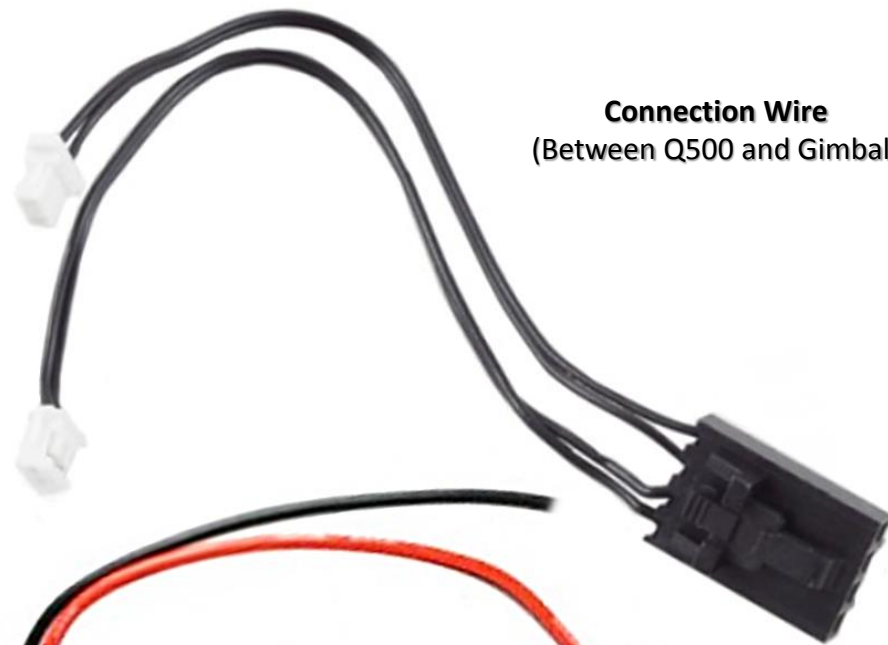


**Li-po Balance Connector
Charge Lead (Extension)**



ST10 Transmitter Battery Door.

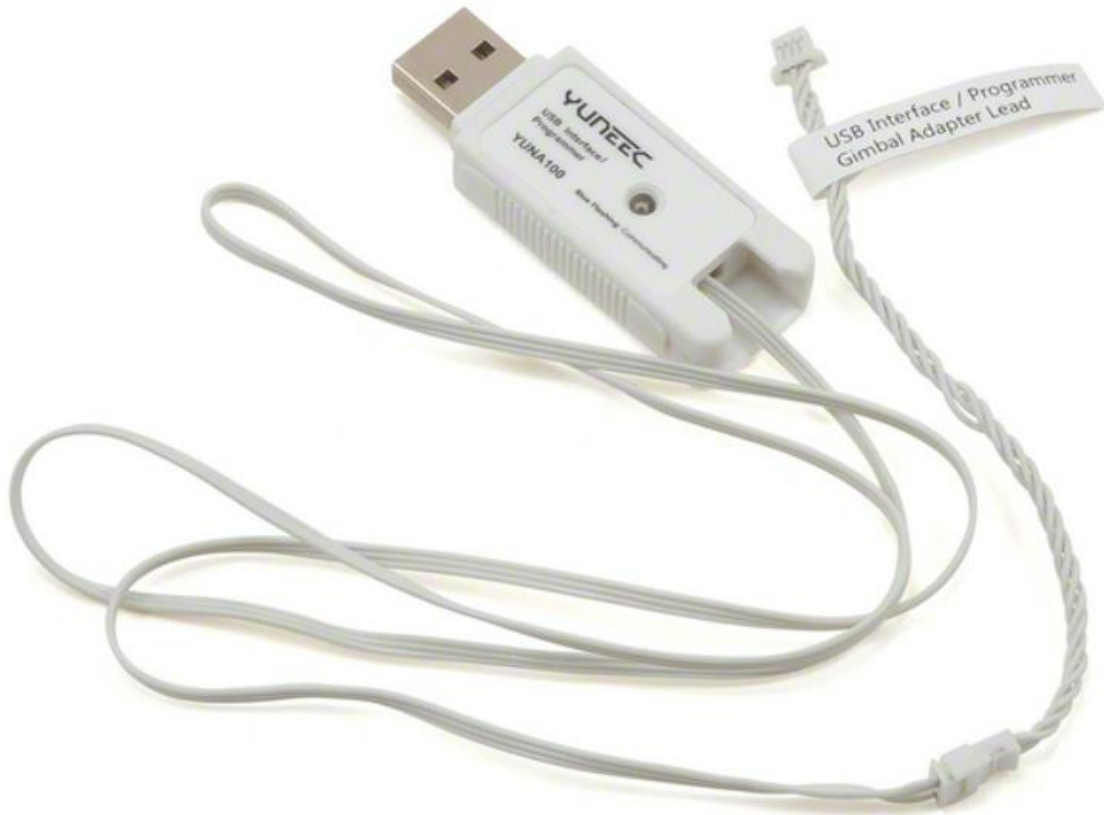
**Connection Wire
(Between Q500 and Gimbal)**



**ESC Rear
(Yuneec Q500)**



USB Interface/Programmer Gimbal Adapter Lead
(Yunec Q500)



12V DC Auto Receptacle Adapter



Come to Visit QuadsForFun

(Official Website)

<http://quadsforfun.wix.com/quadsforfun>

