

CHROMA  
*BLADE*



# CHROMA BLADE



The **Blade Chroma** promises to be a game-changing aircraft. Horizon and Blade offer all in one Drone. The Chroma's Li-Po battery can give to the Pilot a flight time around 30 minutes, on a single charge, making it the longest flying drone to date. This extended battery power gives the Pilot plenty of time to take advantage of the camera.

The CGO3 or CGO2 are the Chroma centerpiece. These units combine a high definition camera and three-axis brushless stabilization gimbal, allowing to the Pilot capturing steady 4K or 1080p videos. These videos can be streamed to the ST10+ transmitter in real time, in addition to multiple IOS and Android devices with the free CGO app (these devices will require 802.11N Wi-Fi connectivity).

The Pilot can also use the camera to shoot 16MP photos from the sky with sharp detail. The CGO3's resolution and frame rate is adjustable and the camera features a no-distortion lens, which removes the fisheye effect, all these camera controls easily accessible on the included ST-10+ radio.



Blade/Yuneec  
ST10+ Transmitter

See all information about **Blade Chroma** Ready to Fly Drone.

The RTF version of the Blade Chroma includes the **Blade ST-10+ transmitter** (manufactured by Yuneec) and different kinds of Camera and Gimbal types.

It has everything the Pilot needs, including the camera controls and a touch-screen video display. See below:

- Large, 5,5 inch (140 mm) touch-screen display with intuitive Android interface;
- Displays live video and real-time telemetry info like speed, altitude and battery voltage;
- Clearly marked switches and buttons;
- Super-simple flight and camera controls;
- Slider switch for adjusting camera tilt;
- Slider switch for adjusting drone speed.

**CHROMA**  
**BLADE**

**SAFE Plus technology** gives to the Pilot several flight modes that have been programmed to make smooth and steady images or videos.

All flight modes feature self-leveling and use GPS and altitude sensors to precisely hold position. SAFE Plus technology will even land the aircraft for the Pilot if he/she activates the Return Home function.

Flight Mode Features:

A) **Smart Mode** - Perfect for beginners: Stick Relativity moves drone in whatever direction the control stick is pushed, no matter which way the nose is pointed. It creates a safe circle barrier that prevents the aircraft from flying too close to the Pilot. The Blade Chroma auto-holds its position and altitude when control sticks are released.

B) **AP Mode** - For more experienced drone pilots: Responds like a conventional drone without Stick Relativity. It gives to the Pilot greater control authority by turning off the safe circle. Keeps control response smooth so panning and tracking shots look great. It auto holds position and altitude when control sticks are released.

C) **Follow Me Mode** – Works as a built-in copilot: Frees the Pilot to focus on lining up the shot. Pan and tilt the camera while the drone follows the Pilot. Drone follows at an altitude and distance the Pilot sets.

D) **Tracking Mode:** The Blade Chroma follows and keeps the camera pointed at whoever holds the ST-10+ controller. The Drone follows at an altitude and distance the Pilot sets.

E) **Return Home Mode:** Returns the Blade Chroma to its start-up point and lands it for the Pilot. It's great for first-time flyers who aren't ready to land themselves. It's also an easy way to regain visual contact if the Pilot loses sight in flight. Resume full control at any time. It is activated automatically if controller signal is lost.

F) **Flight Boundaries Mode:** Keeps the Blade Chroma within altitude and distance limits the Pilot defines. It's easily adjustable using the Chroma programmer. Helps the Pilot avoid sensitive airspace and neighbors.

#### **SPECIFICATIONS:**

Battery: 11.1V 3S 5400mAh Li-Po (6300mah also available)

Completion Level: Ready-to-Fly;

Weight: 1.3 Kg (45.9 oz);

Main Motor Type: Brushless Outrunner;

Approximate Flight Time: 30 minutes.





DRONE DIRECTION

DRONE ALTITUDE

DRONE DISTANCE

**Follow Me Mode:**

The Drone follows the Pilot at a distance and altitude he/she set. So, the Pilot can focus on lining up the perfect shot using the rudder and camera tilt controls. The system acts as a Built-in Copilot.

# CHROMA BLADE



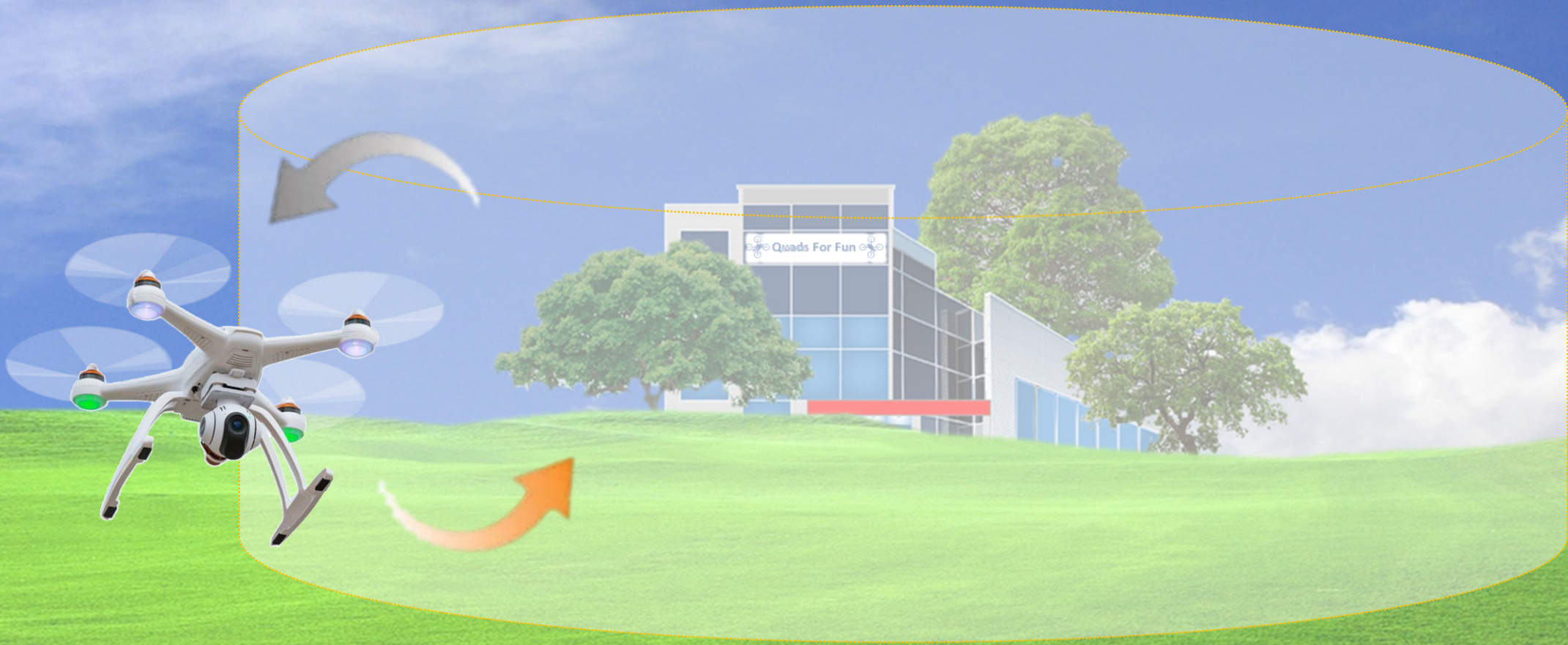
Quads For Fun



### **Tracking Mode:**

The Drone will follow and keep the camera pointed at whoever is holding the ST10+ Transmitter. This is an easy and great way to capture the Pilot shots in action when no one else is around to fly for the Pilot.

# CHROMA *BLADE*



### **Return Home:**

The Drone returns itself to the start-up point and lands for the Pilot. This is ideal for first-time flyers who aren't quite ready to land themselves. It's also an easy way to regain visual contact if the pilot accidentally lose sight in flight. It's a safe landing with the flip of switch.

### **Adjustable Flight Boundaries:**

Fly responsible. Never fly beyond altitude and distance limits that the Pilot defines. This will help the Pilot to avoid sensitive airspace and neighbors. Stay legal and safe.



**CHROMA**  
*BLADE*





# CHROMA BLADE



BLADE CHROMA	CG03 4K CAMERA	CG02+ CAMERA	WITH GPH4 GIMBAL	FIXED CAMERA MOUNT (BNF)
CAMERA	4k, 1080P, 16MP	1080P, 16MP	Not Included	Not Included
GIMBAL	3D-Axis	3D-Axis	3D-Axis	Not Included
RC TRANSMITTER	ST10+ (with Display)	ST10+ (with Display)	Spektrum DX4	Not Included
FLIGHT TIME (Estimated)	30 minutes	30 minutes	30 minutes	30 minutes
BATTERY	Li-Po 3S, 11,1V, 5400mAh	Li-Po 3S, 11,1V, 5400mAh	Li-Po 3S, 11,1V, 5400mAh	Li-Po 3S, 11,1V, 5400mAh
CHARGER	Elite 3S DC Li-Po (EFLC3016)	Elite 3S DC Li-Po (EFLC3016)	Elite 3S DC Li-Po (EFLC3016)	Elite 3S DC Li-Po (EFLC3016)
SAFE PLUS TECHNOLOGY	Yes	Yes	Yes	Yes
SMART MODE	Yes	Yes	Yes	Yes
AP MODE	Yes	Yes	Yes	Yes
FOLOW ME MODE	Yes	Yes	No	No
TRACKING MODE	Yes	Yes	No	No
RETURN HOME	Yes	Yes	Yes	Yes
GO-PRO READY	No	No	Yes	Yes
SPECTRUM COMPATIBLE	No	No	Yes	Yes



**Blade Chroma Camera & Gimbal System**  
(Different Views)



CG02 (Full HD) Camera  
or  
CG03 (4K) Camera



**CHROMA**  
**BLADE**

## Blade Chroma Camera & Gimbal System

(Different Views)



**CHROMA**  
*BLADE*

CG02 (Full HD) Camera  
or  
CG03 (4K) Camera



# CHROMA BLADE

## Blade Chroma Camera & Gimbal System (Different Views)



GPH4 Gimbal



Fixed Camera Mount



# CHROMA BLADE



## CG02 (Full HD) Camera

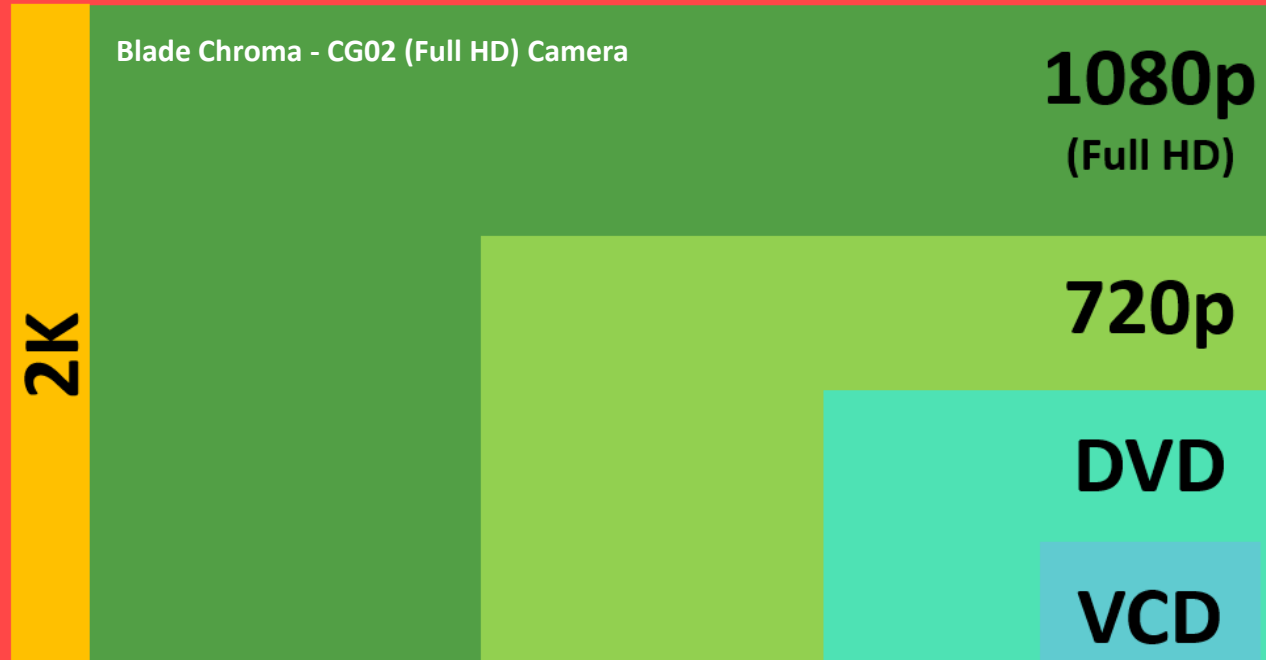
- Dimension: 11.5 x 13.5 x 7.4 cm (4.5 x 1.4 x 2.9 inches);
- Weight: 185 grams (6.5 oz.);
- Focusing System Aerial Optimized Fixed Focus: field of View 130°;
- Video Transmission Range FCC Compliance: up to 600 meters (1968.5 feet);
- CE Compliance: up to 300 meters (984.252 feet) with ST10;
- Video Resolution FULL HD 1080p, adjustable to 60, 50 or 48 FPS;
- Photo Resolution 12 Megapixels; Control Angle Accuracy:  $\pm 0.02^\circ$ ;
- Storage (memory) micro SD Card, Class 10, 4 to 128 GB;
- White Balance: automatic white balance;
- Transmission Band: 5.8 GHz; Operating Voltage: 7.0 volts to 14.0 volts DC;
- Working Temperature: 0 °C – 50 °C; Storage Temperature: -20 °C to 60 °C;
- Angular Vibration Range:  $\pm 0.02^\circ$ ; Control Range Pitch: between -90° and 0°, Yaw: between 0° and 360°.

## CG03 (4K) Camera

- With ultra high-definition (UHD) resolution, four times higher than HD, the camera deliver high-quality images with the ability to capture slow motion 1080p, 120 fps and 12 megapixel photos. It captures in 4K with incredible detail and unparalleled realism;
- Personal Ground Station with Built-in touchscreen;
- Integrated 3-axis precision gimbal camera;
- 4K / 30 fps ultra high definition video;
- 1080p / 120 fps slow motion video;
- Transmission Band: 5.8 GHz; Operating Voltage: 7.0 volts to 14.0 volts DC;
- User controlled video resolution, White balance and light exposure;
- 12 Megapixel Photos with No-Distortion lens;
- Handheld SteadyGrip for capturing video footage.

## Ultra HD (UHD)

The headline fact is simple and dramatic: 4K deliver four times as much detail as 1080p (Full HD). It means that 4K shows image in eight million pixels compared to Full HD which shows in two million pixels image. The image clarity is more fine details, greater texture and an almost photographic emulsion of smoothness.



View from Above



View from Below (Belly)



**CHROMA**  
**BLADE**



**CHROMA**  
**BLADE**

**BLADE** CHROMA  
Lithium Polymer Battery  
3S 11.1V 5400mAh (99.99Wh)

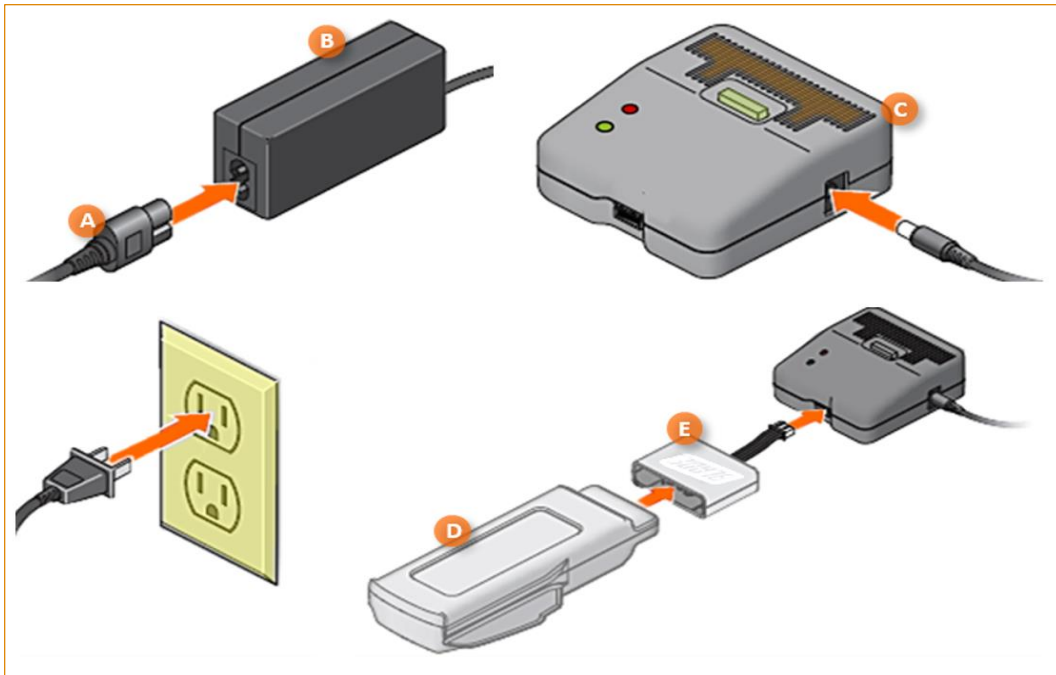
BLADE CHROMA  
ST10+ Quadcopter Full-Size  
Please read all safety precautions before use.  
Hovon Hobby, LLC  
Considered Lithium, Made in China

Li-Po 3S, 11,1 V, 5400 mAh, 59.94 Wh  
(Blade - BLH8619, Horizon Hobby, LLC)



E-FLITE 3S DC Li-Po  
Balancing Charger (3.5A)

CHROMA  
BLADE







# CHROMA *BLADE*

Four Versions of Blade Chroma:

- BLH8665 – BLADE Chroma Camera Drone (CGO2+ and ST10+): about \$1,100;
- BLH8670 – BLADE Chroma Camera Drone (DX4 and for GoPro Hero): about \$1,000
- BLH8675 – BLADE Chroma Camera Drone (4K CGO3 and ST10+): about \$1,300
- BLH8680 – BLADE Chroma Camera Drone (BNF): about \$600

**CHROMA**  
*BLADE*



# CHROMA BLADE

The **Blade Chroma ST10+ (Yuneec)** Personal Ground Station is an operating System Android. It has 10 Channels which offer a transmission distance or range in optimum conditions up to 800 meters. It's a robust radio control modulation protocol with additional built-in video link frequency band of 5.8 GHz. The video transmission distance is up to 600 meters that delivers streaming video to the built-in screen of the transmitter. Real time telemetry data is available on the screen during flight. This data includes flight mode, altitude, speed over ground, distance from home, camera frames per second (FPS), GPS position coordinates, number of GPS satellites available and aircraft battery status. The screen is a LED backlit LCD Screen, capacitive Multi-Touch 5.5", tactile (Vibrating) and Audible Feedbacks. It has a built-In rechargeable Li-po battery witch work on 3.6 volts, 5200mAh and 18.72Wh. It's Auto-Charge via Micro-B USB Cable.



Front View



Side View



Back View

## Blade Chroma Transmitter

(Yuneec ST10+ Transmitter)



## Blade Chroma Touchscreen Display

(Yuneec ST10+ Transmitter)



**Propeller Set**



**Prop Guards Set**



**CHROMA**  
**BLADE**

**IMU Board**  
(Blade Chroma)



**Brushless Motor**  
(Blade Chroma)

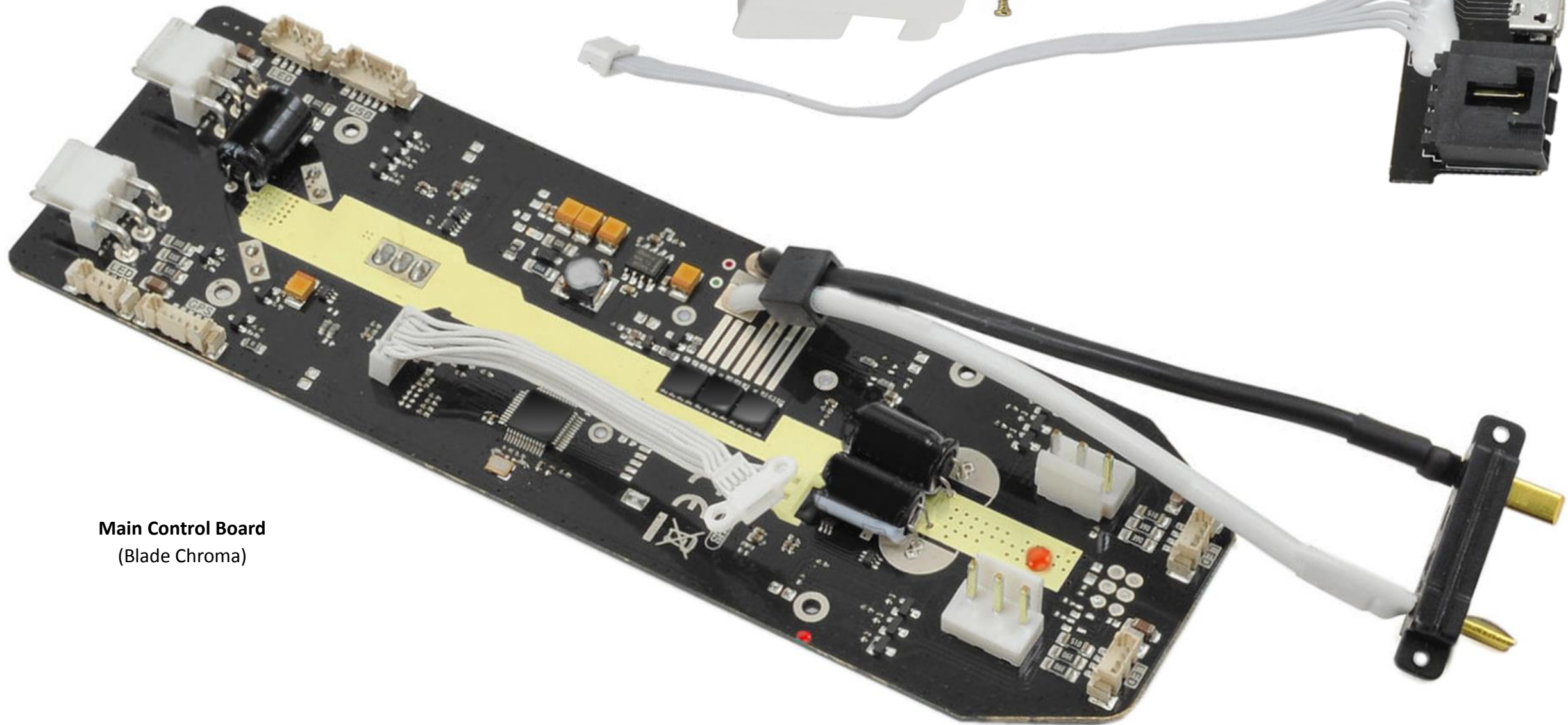


**GPS Antenna**  
(Blade Chroma)



**ST-10+ Receiver**  
(Blade Chroma)





**Main Control Board**  
(Blade Chroma)

**Update Board**  
(Blade Chroma)

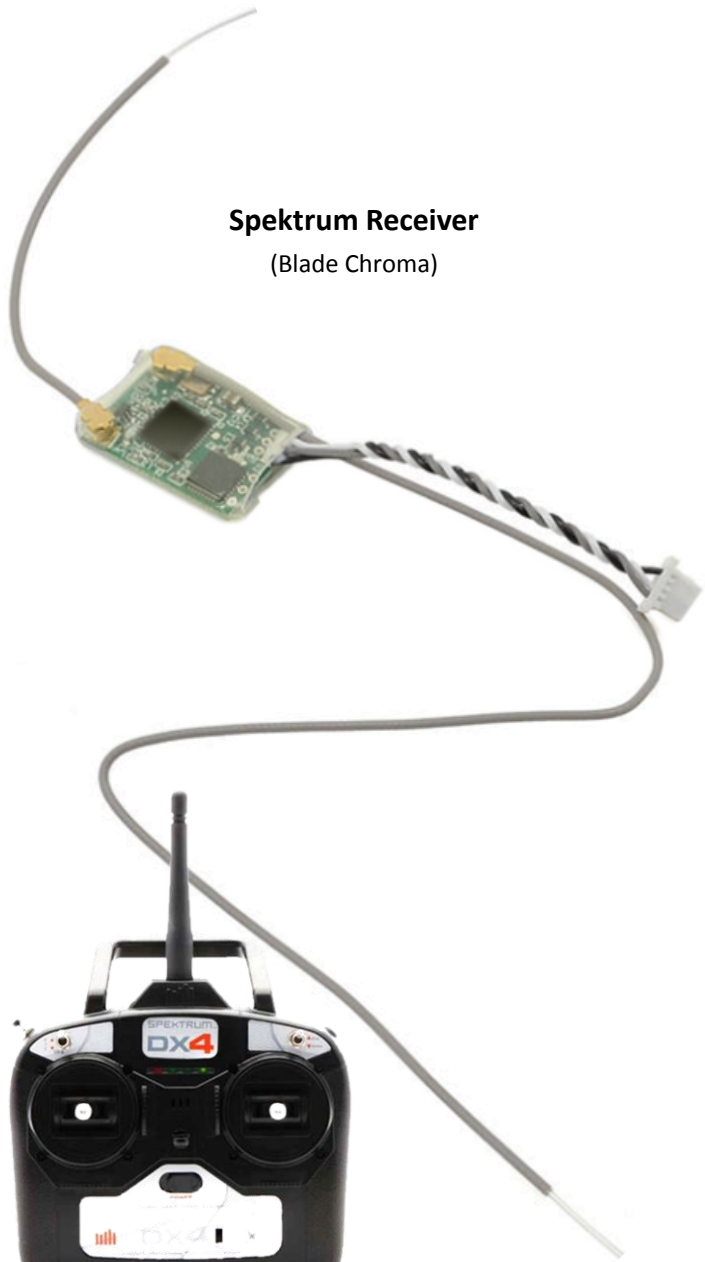


**Main Frame**  
(Blade Chroma)



**Landing Gear Set**  
(Blade Chroma)

**Spektrum Receiver**  
(Blade Chroma)



**LED Cover**  
(Blade Chroma)



**LED Light**  
(Blade Chroma)



**Wire Cover**  
(Blade Chroma)





Quads For Fun

QuadsForFun Official Website:  
<http://quadsforfun.wix.com/quadsforfun>